

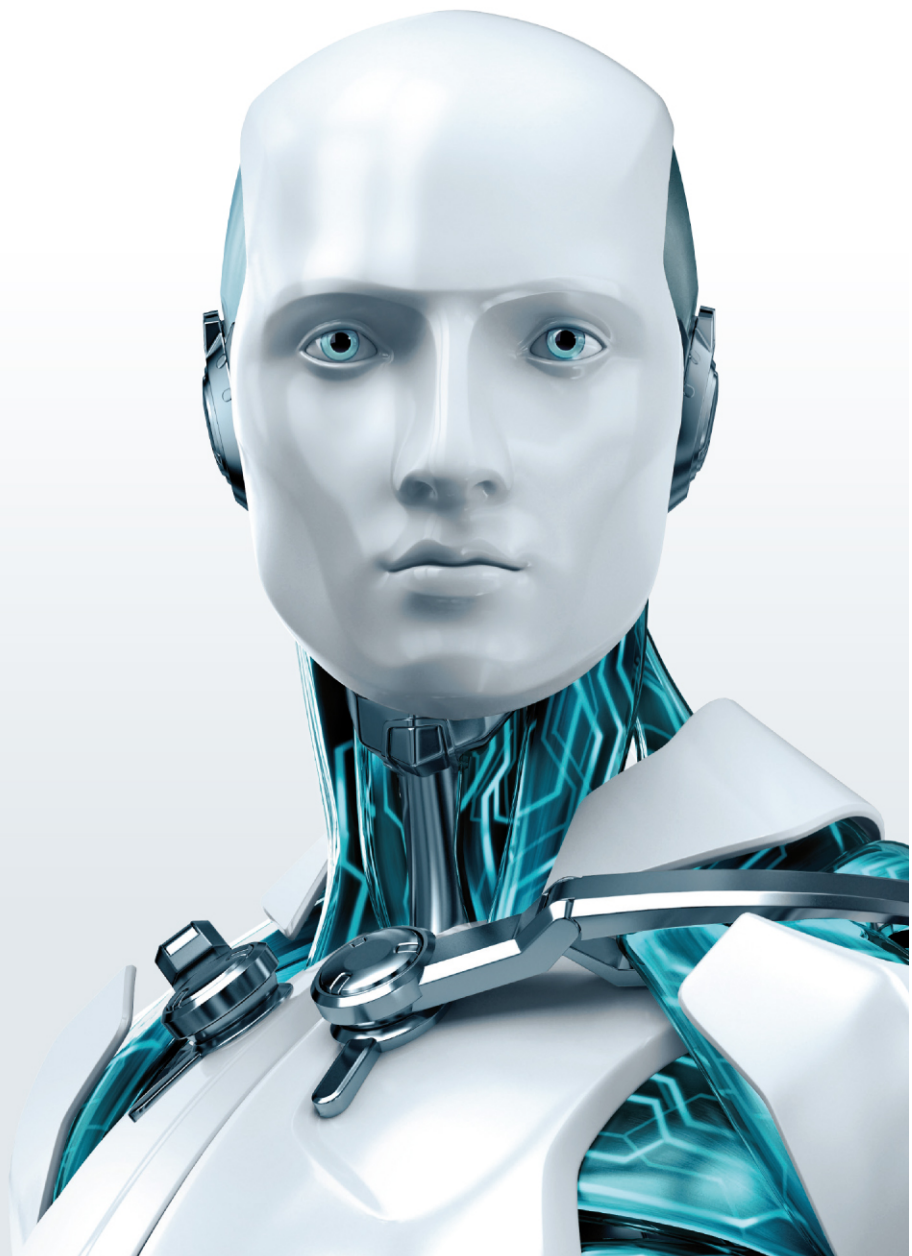
ESET Secure Authentication

API vs SDK overview

Document Version 1.0

12 December, 2013

www.eset.com



Summary

ESET Secure Authentication already comes with an Authentication API. This allows clients to protect more than Microsoft applications and VPN's. They can integrate ESA's two factor authentication into logon for custom built applications such as intranets, client-portals, CRM, accounting systems and many more with a few simple lines of code. It builds on the Active Directory product and uses the same storage and user management tools.

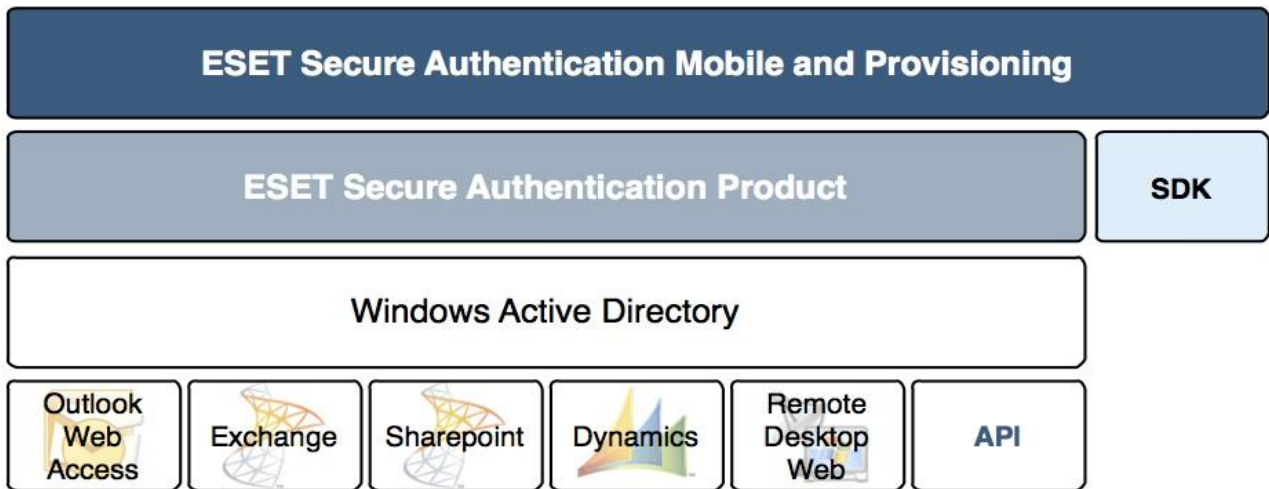
The ESET Secure Authentication SDK allows deeper integration for similar custom/bespoke applications using the client's own storage and management. Authentication can be added to points other than logon e.g. orders processing, password change etc.

Full details are contained in the SDK documentation and Sales Enablement material.

This document gives a simple high-level summary of the differences between the API and the SDK.

Feature	API	SDK
Provides two-factor authentication	✓	✓
Meets compliance standards	✓	✓
Provisions users via ESET's provisioning server	✓	✓
Uses ESET Secure Authentication mobile app to generate OTPs	✓	✓
Designed for custom applications	✓	✓
Can be used to protect log-on	✓	✓
Requires developer to add to custom applications	✓	✓
Can be used to protect processes other than logon	✓	✓
Part of the standard ESET Secure Authentication product	✓	
Standard pricing model	✓	
Requires very little development to integrate	✓	
Requires Active Directory	✓	
Stores user data in Active Directory	✓	
Stores user data in client's own database		✓
Client can use own SMS gateway		✓

API and SDK – common elements:



NO TWO-FACTOR AUTHENTICATION



TWO-FACTOR AUTHENTICATION WITH API

